

Comune di Cucciago
Provincia di Como



Via Sant'Arialdo, 2 – Cucciago 22060 (CO)

Aggiornamento del
Piano di Classificazione Acustica



Fonte: 3B Meteo

Report rilievi fonometrici

Adottato con D.C.C. n. 15 del 28 aprile 2025

Approvato con D.C.C. n.

Marzo 2025



Via Santa Caterina, n. 41 - 20025 Legnano (Mi)
T. 0331822348 – M. info@studiososter.it
www.studiososter.it



Via Canturina, n. 321 - 22100 Como (CO)
T. 031921627 – M. info@studiotecnicobl.it
www.studiotecnicobl.it



Gruppo di lavoro

Comune di Cucciago

Enrico Molteni

Sindaco

Giovanni Bergna

Vice sindaco con delega all'Urbanistica,
Lavori pubblici, Ambiente e territorio

Ufficio Tecnico
Elisabetta Marchisio
Silvana Orsenigo
Emanuele Zaniboni



COMUNE DI CUCCIAGO

Provincia di Como

Scheda Rilievo n. 1

Punto di Misura:

P1

Istituto Comprensivo Cucciago-Grandate-Casinate
Scuola Secondaria di Primo grado «Madre Teresa»

Coordinate rilievo

45°44'27"N 9°05'33"E



Data inizio rilievo

11/10/2024

Data fine rilievo

14/10/2024

Durata rilievo

254568 s

Zonizzazione acustica proposta

Classe I

Rilievo Diurno

LAeq	L95	L90	L50	L10	L5	L1
49,7	32,4	33,6	40,6	50,5	53,8	60,8
48,5	30,1	31,4	38,0	50,7	54,1	59,6
46,9	28,3	29,8	36,2	47,8	50,8	57,4
48,8	35,1	36,8	43,9	51,6	54,0	58,4

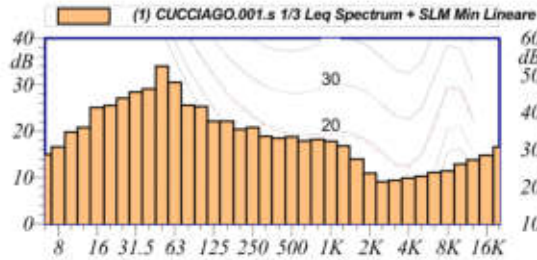
Rilievo Notturno

LAeq	L95	L90	L50	L10	L5	L1
37,5	26,6	27,6	31,7	36,8	40,3	47,7
37,4	23,7	24,4	28,4	37,1	41,4	49,7
36,7	26,9	27,4	29,6	37,5	41,4	48,9

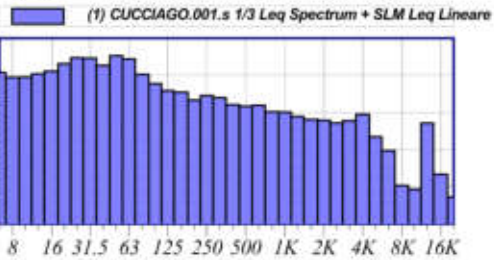


Nome misura: (1) CUCCIAGO.001.s
Località: SCUOLE
Strumentazione: 831 0002436
Durata: 29720 (secondi)
Nome operatore:
Data, ora misura: 11/10/2024 13:44:41
Over SLM: N/A
Over OBA: N/A

(1) CUCCIAGO.001.s 1/3 Leq Spectrum + SLM Leq Lineare					
12.5 Hz	50.4 dB	160 Hz	45.5 dB	2000 Hz	37.9 dB
16 Hz	51.1 dB	200 Hz	43.3 dB	2500 Hz	37.2 dB
20 Hz	53.2 dB	250 Hz	44.5 dB	3150 Hz	37.8 dB
25 Hz	54.7 dB	315 Hz	44.0 dB	4000 Hz	39.5 dB
31.5 Hz	54.6 dB	400 Hz	42.1 dB	5000 Hz	33.5 dB
40 Hz	52.7 dB	500 Hz	41.7 dB	6300 Hz	29.7 dB
50 Hz	55.3 dB	630 Hz	42.0 dB	8000 Hz	20.4 dB
63 Hz	54.4 dB	800 Hz	40.2 dB	10000 Hz	19.4 dB
80 Hz	50.3 dB	1000 Hz	40.1 dB	12500 Hz	37.2 dB
100 Hz	47.8 dB	1250 Hz	38.9 dB	16000 Hz	23.4 dB
125 Hz	45.9 dB	1600 Hz	38.1 dB	20000 Hz	17.2 dB



L1: 60.8 dBA L5: 53.8 dBA
L10: 50.5 dBA L50: 40.6 dBA
L90: 33.6 dBA L95: 32.4 dBA



$L_{Aeq} = 49.7 \text{ dB}$

Annotazioni:

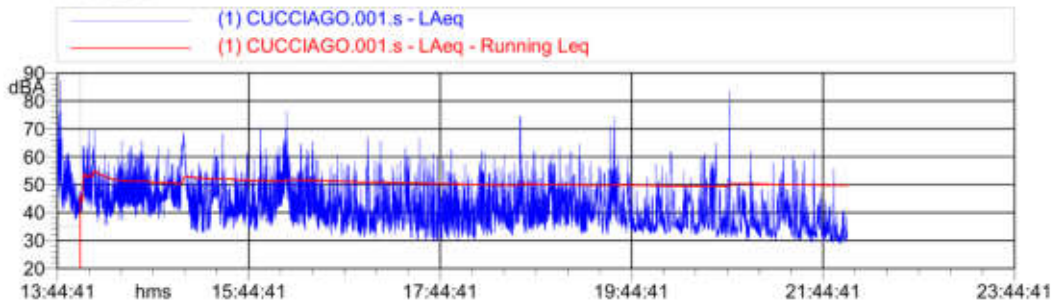
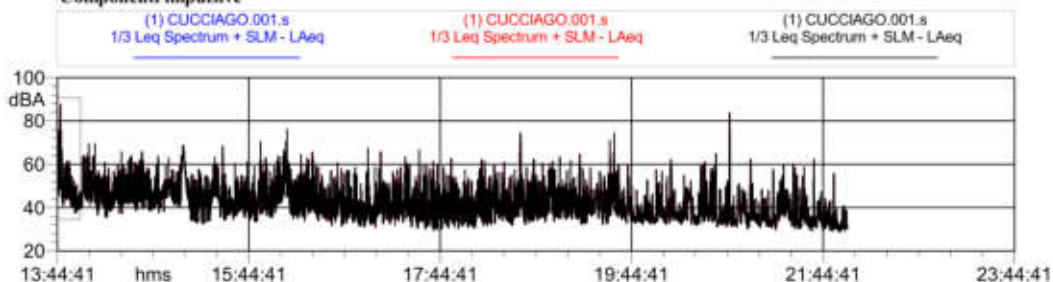


Tabella Automatica delle Maschereature				
Nome	Inizio	Durata	Leq	
Totale	13:44:41	08:15:19.500		50.6 dBA
Non Mascherato	13:59:02	08:00:58.500		49.7 dBA
Mascherato	13:44:41	00:14:21		58.9 dBA
Nuova Maschera: f	13:44:41	00:14:21		58.9 dBA

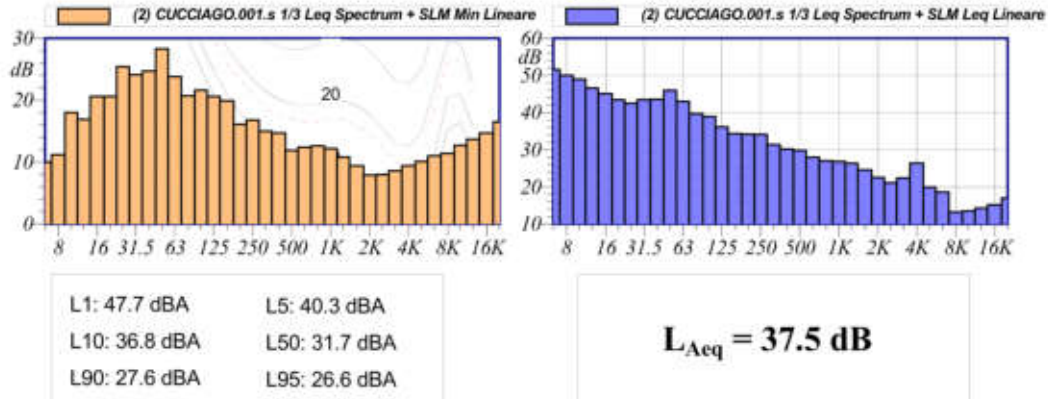
Componenti impulsive





Nome misura: (2) CUCCIAGO.001.s
Località: SCUOLE
Strumentazione: 831 0002436
Durata: 28801 (secondi)
Nome operatore:
Data, ora misura: 11/10/2024 22:00:00
Over SLM: N/A
Over OBA: N/A

(2) CUCCIAGO.001.s 1/3 Leq Spectrum + SLM Leq Lineare					
12.5 Hz	46.6 dB	160 Hz	34.3 dB	2000 Hz	22.6 dB
16 Hz	45.1 dB	200 Hz	34.2 dB	2500 Hz	21.1 dB
20 Hz	43.5 dB	250 Hz	34.1 dB	3150 Hz	22.4 dB
25 Hz	42.5 dB	315 Hz	31.4 dB	4000 Hz	26.4 dB
31.5 Hz	43.5 dB	400 Hz	30.2 dB	5000 Hz	19.9 dB
40 Hz	43.6 dB	500 Hz	29.8 dB	6300 Hz	18.6 dB
50 Hz	46.0 dB	630 Hz	28.0 dB	8000 Hz	13.2 dB
63 Hz	43.0 dB	800 Hz	27.0 dB	10000 Hz	13.5 dB
80 Hz	39.7 dB	1000 Hz	26.8 dB	12500 Hz	14.3 dB
100 Hz	38.9 dB	1250 Hz	26.3 dB	16000 Hz	15.2 dB
125 Hz	36.1 dB	1600 Hz	24.6 dB	20000 Hz	17.0 dB



Annotazioni:

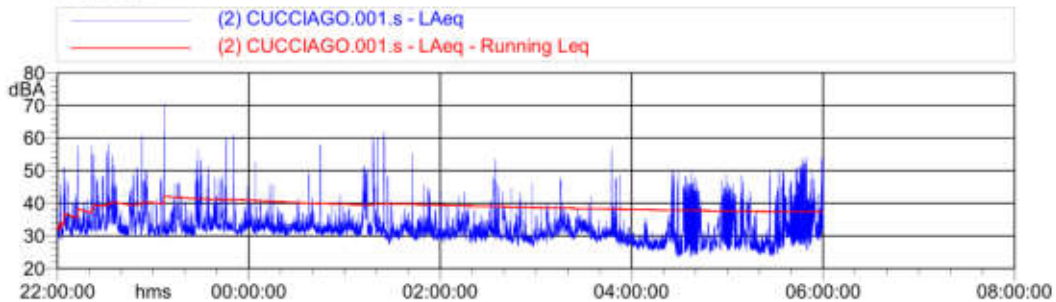
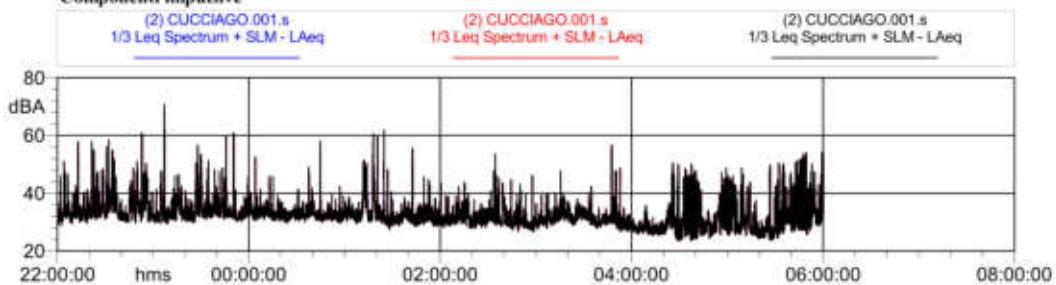


Tabella Automatica delle Maschere			
Nome	Inizio	Durata	Leq
Totale	22:00:00	08:00:00.500	37.5 dBA
Non Mascherato	22:00:00	08:00:00.500	37.5 dBA
Mascherato		00:00:00	0.0 dBA

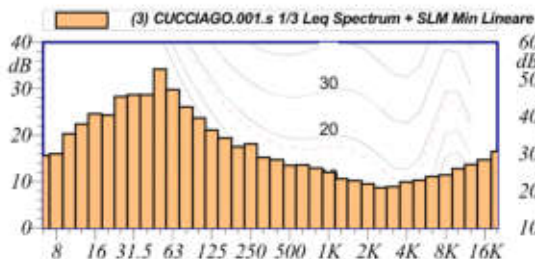
Componenti impulsive



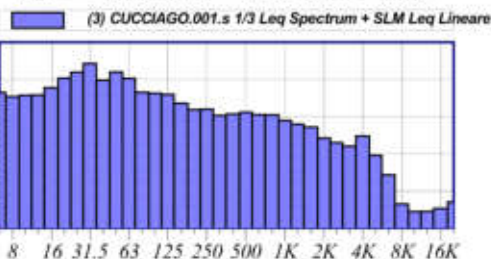


Nome misura: (3) CUCCIAGO.001.s
Località: SCUOLE
Strumentazione: 831 0002436
Durata: 57601 (secondi)
Nome operatore:
Data, ora misura: 12/10/2024 06:00:00
Over SLM: N/A
Over OBA: N/A

(3) CUCCIAGO.001.s 1/3 Leq Spectrum + SLM Leq Lineare					
12.5 Hz	45.8 dB	160 Hz	43.6 dB	2000 Hz	34.2 dB
16 Hz	47.8 dB	200 Hz	41.9 dB	2500 Hz	33.0 dB
20 Hz	50.4 dB	250 Hz	42.0 dB	3150 Hz	32.0 dB
25 Hz	51.9 dB	315 Hz	40.3 dB	4000 Hz	34.8 dB
31.5 Hz	54.3 dB	400 Hz	40.7 dB	5000 Hz	29.6 dB
40 Hz	49.8 dB	500 Hz	41.2 dB	6300 Hz	24.3 dB
50 Hz	52.0 dB	630 Hz	40.5 dB	8000 Hz	16.5 dB
63 Hz	50.3 dB	800 Hz	40.5 dB	10000 Hz	14.4 dB
80 Hz	46.5 dB	1000 Hz	38.9 dB	12500 Hz	14.5 dB
100 Hz	46.3 dB	1250 Hz	38.0 dB	16000 Hz	15.3 dB
125 Hz	45.9 dB	1600 Hz	37.2 dB	20000 Hz	17.0 dB



L1: 59.6 dBA L5: 54.1 dBA
L10: 50.7 dBA L50: 38.0 dBA
L90: 31.4 dBA L95: 30.1 dBA



$L_{Aeq} = 48.5 \text{ dB}$

Annotazioni:

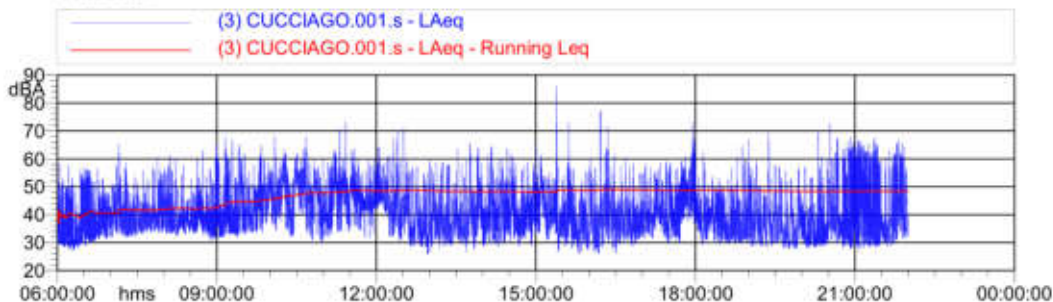
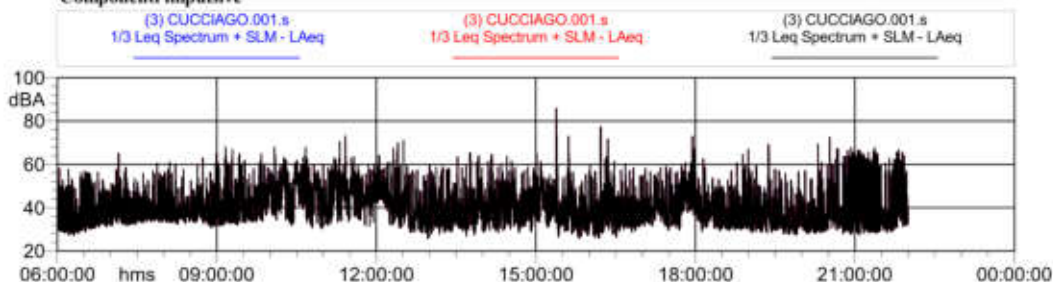


Tabella Automatica delle Maschere			
Nome	Inizio	Durata	Leq
Totale	06:00:00	16:00:00.500	48.5 dBA
Non Mascherato	06:00:00	16:00:00.500	48.5 dBA
Mascherato		00:00:00	0.0 dBA

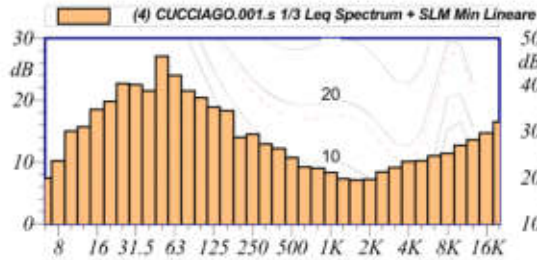
Componenti impulsive



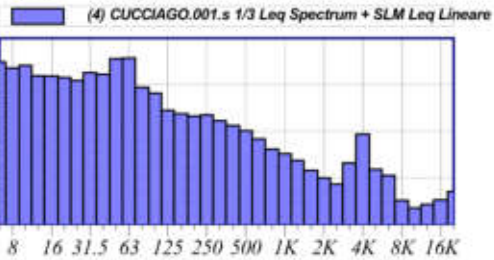


Nome misura: (4) CUCCIAGO.001.s
Località: SCUOLE
Strumentazione: 831 0002436
Durata: 28801 (secondi)
Nome operatore:
Data, ora misura: 12/10/2024 22:00:00
Over SLM: N/A
Over OBA: N/A

(4) CUCCIAGO.001.s 1/3 Leq Spectrum + SLM Leq Lineare					
12.5 Hz	41.9 dB	160 Hz	33.7 dB	2000 Hz	19.9 dB
16 Hz	41.9 dB	200 Hz	33.2 dB	2500 Hz	18.6 dB
20 Hz	41.6 dB	250 Hz	33.5 dB	3150 Hz	23.1 dB
25 Hz	40.9 dB	315 Hz	32.3 dB	4000 Hz	29.3 dB
31.5 Hz	42.6 dB	400 Hz	31.2 dB	5000 Hz	21.8 dB
40 Hz	42.2 dB	500 Hz	30.1 dB	6300 Hz	20.5 dB
50 Hz	45.6 dB	630 Hz	28.3 dB	8000 Hz	15.1 dB
63 Hz	45.7 dB	800 Hz	26.1 dB	10000 Hz	13.4 dB
80 Hz	39.4 dB	1000 Hz	25.2 dB	12500 Hz	14.2 dB
100 Hz	38.1 dB	1250 Hz	23.7 dB	16000 Hz	15.2 dB
125 Hz	34.5 dB	1600 Hz	21.5 dB	20000 Hz	17.0 dB



L1: 49.7 dBA L5: 41.4 dBA
L10: 37.1 dBA L50: 28.4 dBA
L90: 24.4 dBA L95: 23.7 dBA



$L_{Aeq} = 37.4 \text{ dB}$

Annotazioni:

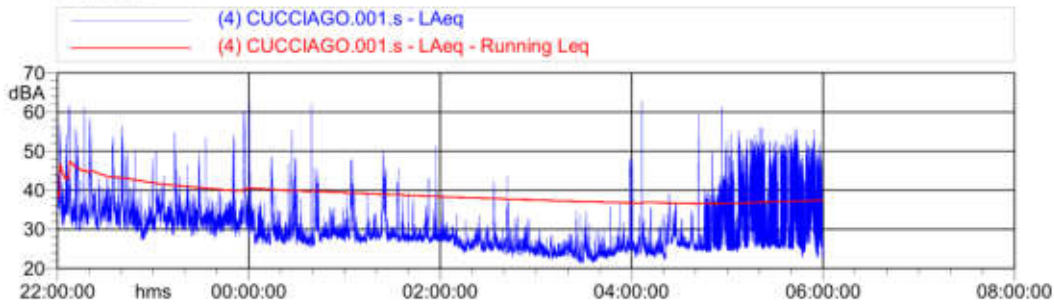
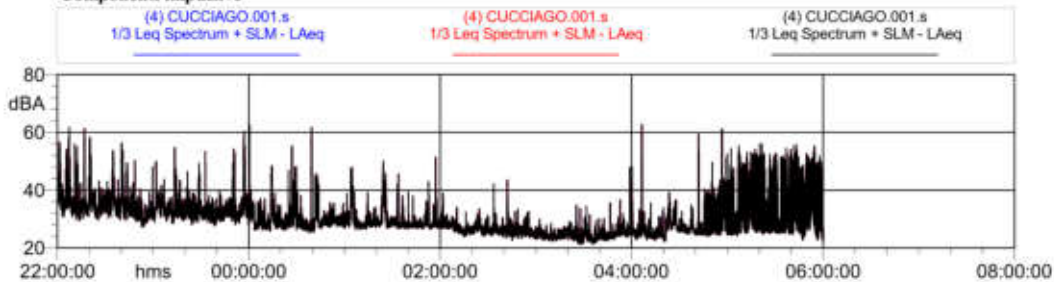


Tabella Automatica delle Maschere				
Nome	Inizio	Durata	Leq	
Totale	22:00:00	08:00:00.500		37.4 dBA
Non Mascherato	22:00:00	08:00:00.500		37.4 dBA
Mascherato		00:00:00		0.0 dBA

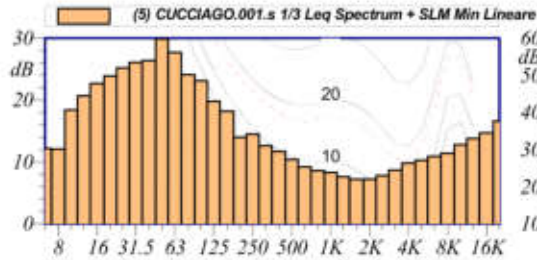
Componenti impulsive



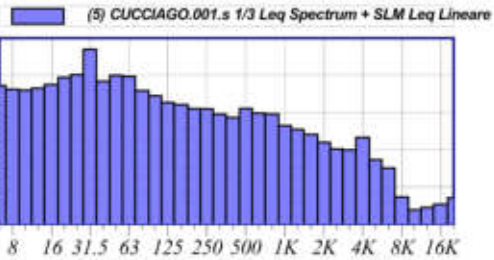


Nome misura: (5) CUCCIAGO.001.s
Località: SCUOLE
Strumentazione: 831 0002436
Durata: 57601 (secondi)
Nome operatore:
Data, ora misura: 13/10/2024 06:00:00
Over SLM: N/A
Over OBA: N/A

(5) CUCCIAGO.001.s 1/3 Leq Spectrum + SLM Leq Lineare					
12.5 Hz	46.5 dB	160 Hz	42.1 dB	2000 Hz	31.9 dB
16 Hz	47.5 dB	200 Hz	41.0 dB	2500 Hz	30.2 dB
20 Hz	49.4 dB	250 Hz	41.0 dB	3150 Hz	29.9 dB
25 Hz	50.2 dB	315 Hz	39.5 dB	4000 Hz	33.3 dB
31.5 Hz	57.0 dB	400 Hz	38.6 dB	5000 Hz	27.3 dB
40 Hz	48.4 dB	500 Hz	41.1 dB	6300 Hz	25.0 dB
50 Hz	50.0 dB	630 Hz	39.8 dB	8000 Hz	17.3 dB
63 Hz	49.7 dB	800 Hz	39.6 dB	10000 Hz	13.8 dB
80 Hz	45.9 dB	1000 Hz	36.4 dB	12500 Hz	14.4 dB
100 Hz	44.5 dB	1250 Hz	35.4 dB	16000 Hz	15.3 dB
125 Hz	42.7 dB	1600 Hz	34.1 dB	20000 Hz	17.0 dB



L1: 57.4 dBA L5: 50.8 dBA
L10: 47.8 dBA L50: 36.2 dBA
L90: 29.8 dBA L95: 28.3 dBA



$L_{Aeq} = 46.9 \text{ dB}$

Annotazioni:

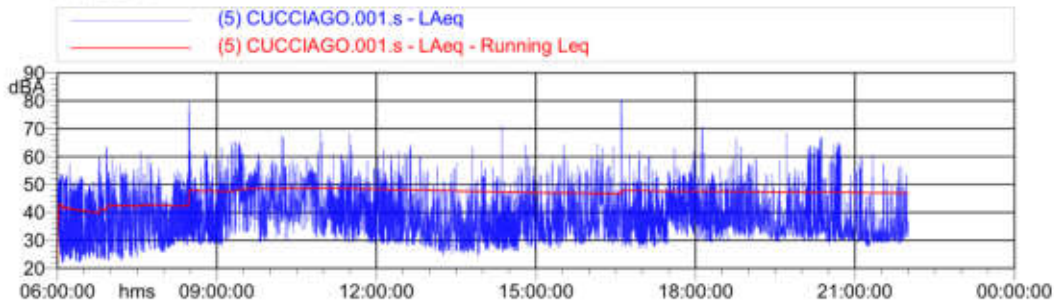
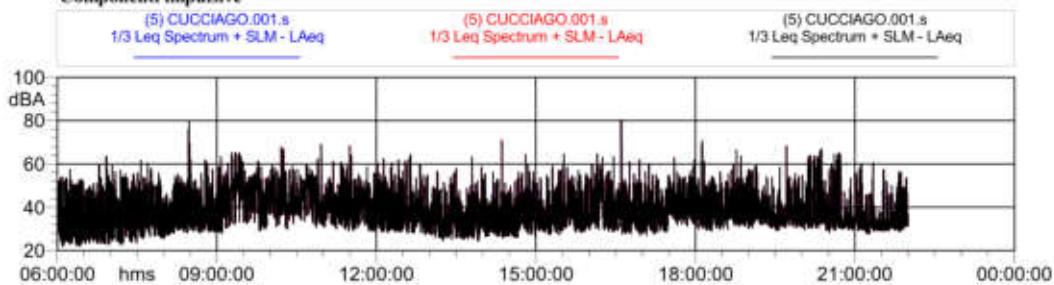


Tabella Automatica delle Maschereature			
Nome	Inizio	Durata	Leq
Totale	06:00:00	16:00:00.500	46.9 dBA
Non Mascherato	06:00:00	16:00:00.500	46.9 dBA
Mascherato		00:00:00	0.0 dBA

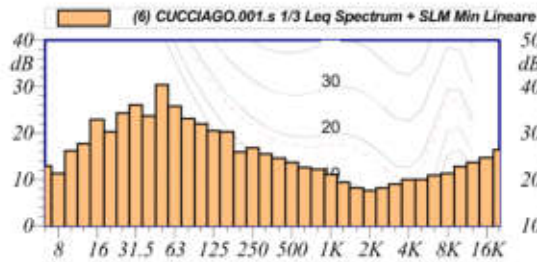
Componenti impulsive



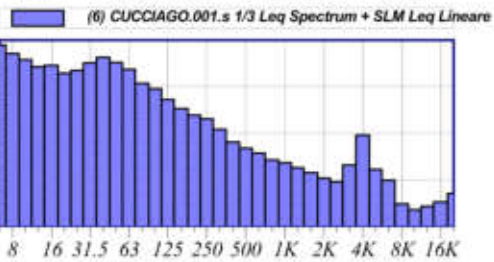


Nome misura: (6) CUCCIAGO.001.s
Località: SCUOLE
Strumentazione: 831 0002436
Durata: 28801 (secondi)
Nome operatore:
Data, ora misura: 13/10/2024 22:00:00
Over SLM: N/A
Over OBA: N/A

(6) CUCCIAGO.001.s 1/3 Leq Spectrum + SLM Leq Lineare					
12.5 Hz	44.3 dB	160 Hz	35.3 dB	2000 Hz	20.3 dB
16 Hz	44.5 dB	200 Hz	33.9 dB	2500 Hz	19.5 dB
20 Hz	42.9 dB	250 Hz	33.1 dB	3150 Hz	23.1 dB
25 Hz	43.5 dB	315 Hz	30.8 dB	4000 Hz	29.5 dB
31.5 Hz	45.1 dB	400 Hz	28.1 dB	5000 Hz	22.2 dB
40 Hz	46.3 dB	500 Hz	26.7 dB	6300 Hz	19.9 dB
50 Hz	45.2 dB	630 Hz	25.7 dB	8000 Hz	14.7 dB
63 Hz	43.7 dB	800 Hz	24.2 dB	10000 Hz	13.5 dB
80 Hz	40.7 dB	1000 Hz	23.6 dB	12500 Hz	14.2 dB
100 Hz	39.5 dB	1250 Hz	22.5 dB	16000 Hz	15.2 dB
125 Hz	37.2 dB	1600 Hz	21.5 dB	20000 Hz	17.0 dB



L1: 48.9 dBA L5: 41.4 dBA
L10: 37.5 dBA L50: 29.6 dBA
L90: 27.4 dBA L95: 26.9 dBA



$L_{Aeq} = 36.7 \text{ dB}$

Annotazioni:

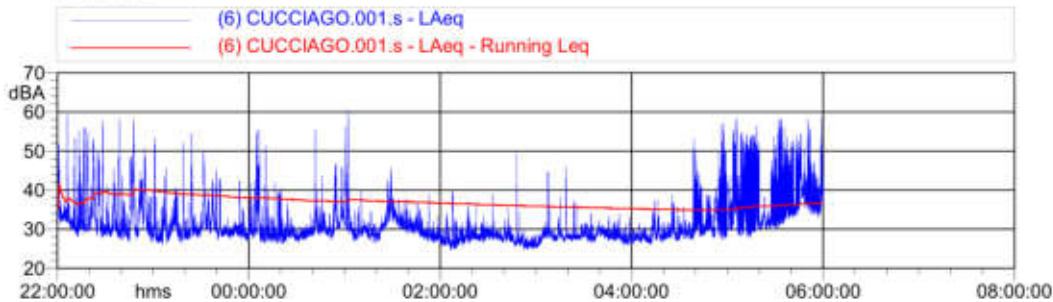
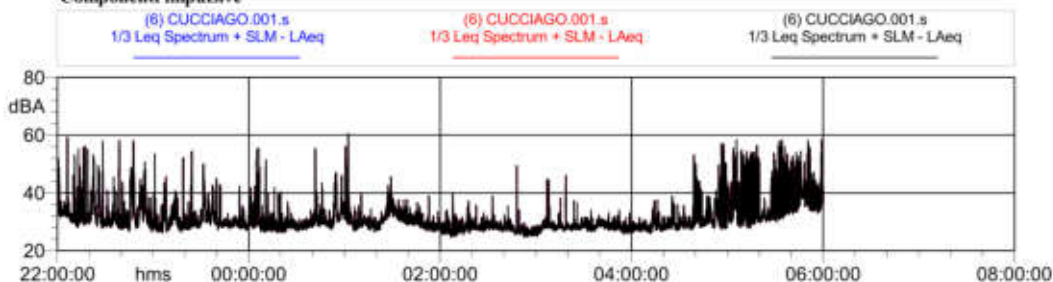


Tabella Automatica delle Maschere			
Nome	Inizio	Durata	Leq
Totale	22:00:00	08:00:00.500	36.7 dBA
Non Mascherato	22:00:00	08:00:00.500	36.7 dBA
Mascherato		00:00:00	0.0 dBA

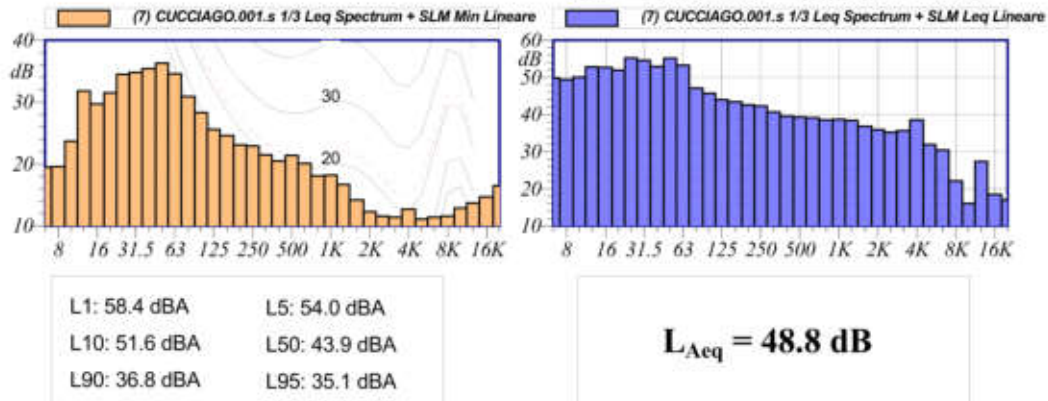
Componenti impulsive





Nome misura: (7) CUCCIAGO.001.s
Località: SCUOLE
Strumentazione: 831 0002436
Durata: 23249 (secondi)
Nome operatore:
Data, ora misura: 14/10/2024 06:00:00
Over SLM: N/A
Over OBA: N/A

(7) CUCCIAGO.001.s 1/3 Leq Spectrum + SLM Leq Lineare					
12.5 Hz	52.8 dB	160 Hz	43.4 dB	2000 Hz	35.9 dB
16 Hz	52.7 dB	200 Hz	42.6 dB	2500 Hz	35.2 dB
20 Hz	51.9 dB	250 Hz	42.3 dB	3150 Hz	35.7 dB
25 Hz	55.2 dB	315 Hz	40.7 dB	4000 Hz	38.5 dB
31.5 Hz	54.6 dB	400 Hz	39.6 dB	5000 Hz	31.9 dB
40 Hz	52.9 dB	500 Hz	39.3 dB	6300 Hz	30.4 dB
50 Hz	55.2 dB	630 Hz	39.1 dB	8000 Hz	22.1 dB
63 Hz	53.3 dB	800 Hz	38.6 dB	10000 Hz	16.0 dB
80 Hz	47.1 dB	1000 Hz	38.7 dB	12500 Hz	27.4 dB
100 Hz	45.7 dB	1250 Hz	38.4 dB	16000 Hz	18.5 dB
125 Hz	44.0 dB	1600 Hz	36.8 dB	20000 Hz	17.0 dB



Annotazioni:

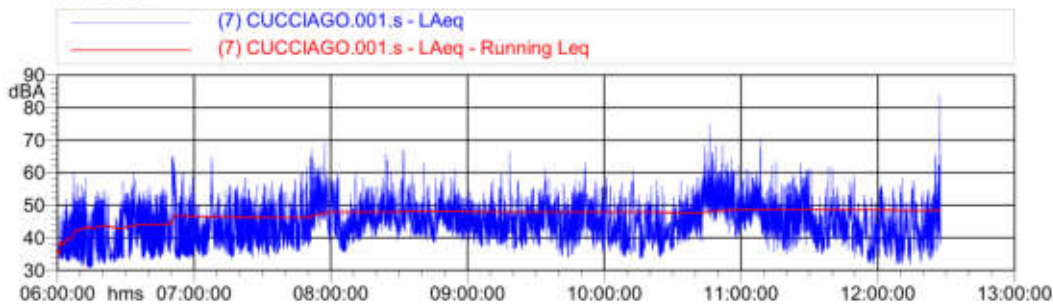
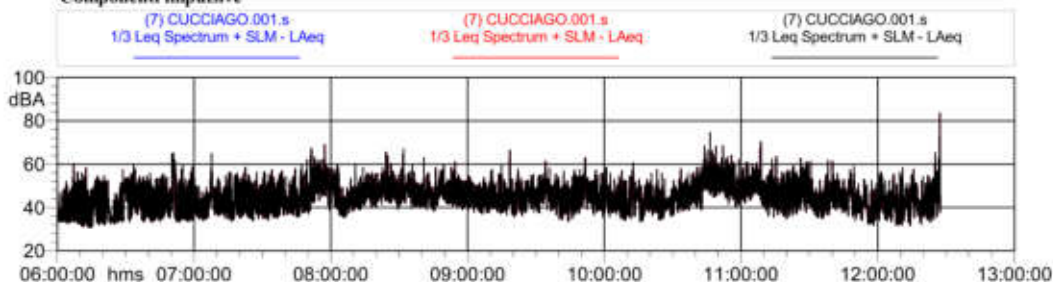


Tabella Automatica delle Maschere			
Nome	Inizio	Durata	Leq
Totale	06:00:00	06:27:28.500	48.8 dBA
Non Mascherato	06:00:00	06:27:28.500	48.8 dBA
Mascherato		00:00:00	0.0 dBA

Componenti impulsive





COMUNE DI CUCCIAGO Provincia di Como

Scheda Rilievo n. 2

Punto di Misura:

P2
RSA Pascoli
Via Navedano, 26, 22060 Cucciago CO

Coordinate rilievo

45°44'46"N 9°06'14"E



Data inizio rilievo

11/10/2024

Data fine rilievo

12/10/2024

Durata rilievo

83072 s

Zonizzazione acustica proposta

Classe II

Rilievo Diurno

LAeq	L95	L90	L50	L10	L5	L1
56,0	44,8	46,7	53,6	58,7	60,4	64,8
58,7	50,0	51,3	55,2	60,0	61,3	71,1

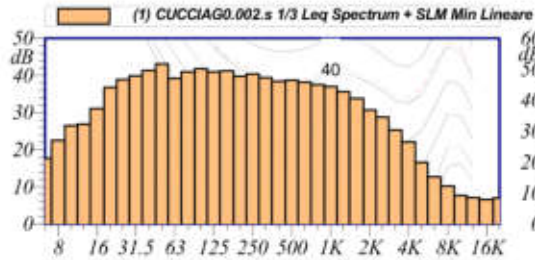
Rilievo Notturno

LAeq	L95	L90	L50	L10	L5	L1
50,3	43,3	43,8	48,4	53,1	54,4	57,6

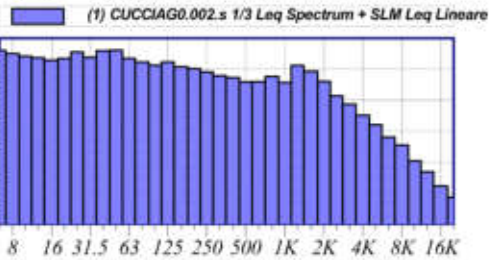


Nome misura: (1) CUCCIAGO.002.s
Località: RSA Pascoli
Strumentazione: 831C 11541
Durata: 27535 (secondi)
Nome operatore: Federico Bassani
Data, ora misura: 11/10/2024 13:21:06
Over SLM: N/A
Over OBA: N/A

(1) CUCCIAGO.002.s 1/3 Leq Spectrum + SLM Leq Lineare					
12.5 Hz	53.7 dB	160 Hz	50.8 dB	2000 Hz	46.1 dB
16 Hz	52.9 dB	200 Hz	50.2 dB	2500 Hz	41.4 dB
20 Hz	53.5 dB	250 Hz	49.1 dB	3150 Hz	38.7 dB
25 Hz	55.5 dB	315 Hz	47.9 dB	4000 Hz	35.1 dB
31.5 Hz	53.9 dB	400 Hz	47.3 dB	5000 Hz	32.0 dB
40 Hz	56.0 dB	500 Hz	45.9 dB	6300 Hz	28.1 dB
50 Hz	56.2 dB	630 Hz	46.0 dB	8000 Hz	25.5 dB
63 Hz	53.5 dB	800 Hz	47.7 dB	10000 Hz	20.4 dB
80 Hz	52.3 dB	1000 Hz	45.7 dB	12500 Hz	16.9 dB
100 Hz	51.3 dB	1250 Hz	51.2 dB	16000 Hz	12.3 dB
125 Hz	52.3 dB	1600 Hz	49.3 dB	20000 Hz	8.6 dB



L1: 65.4 dBA L5: 59.0 dBA
L10: 57.0 dBA L50: 53.2 dBA
L90: 50.6 dBA L95: 50.0 dBA



$L_{Aeq} = 56.0 \text{ dB}$

Annotazioni:

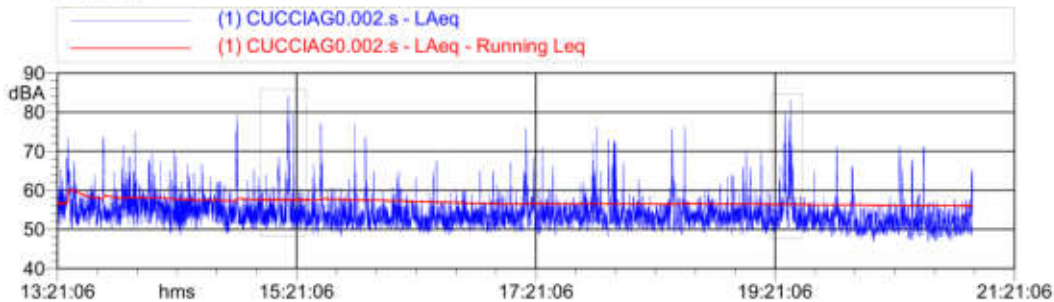
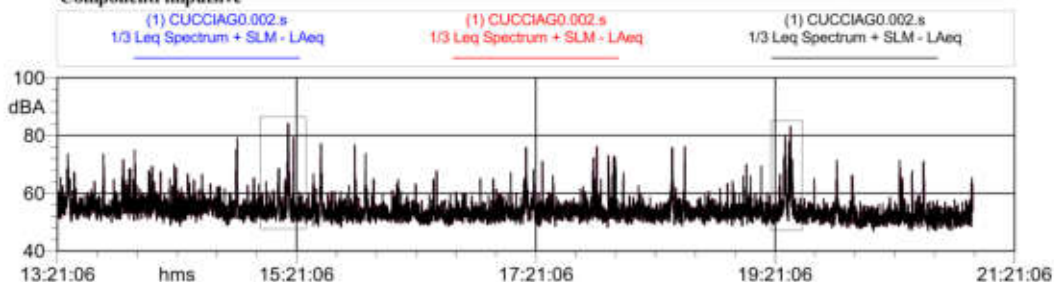


Tabella Automatica delle Maschere				
Nome	Inizio	Durata	Leq	
Totale	13:21:06	07:38:54.500		57.3 dBA
Non Mascherato	13:21:06	07:00:45.500		56.0 dBA
Mascherato	15:02:47	00:38:09		63.2 dBA
Nuova Maschera 2	15:02:47	00:22:51		62.8 dBA
Nuova Maschera 1	19:19:09	00:15:18		63.8 dBA

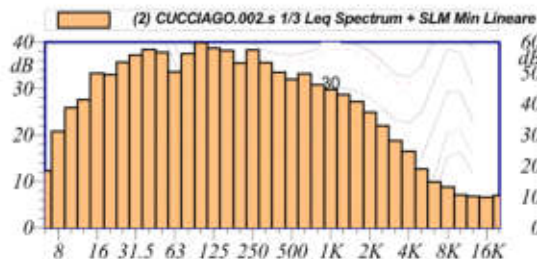
Componenti impulsive



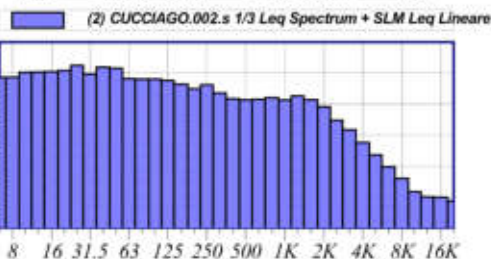


Nome misura: (2) CUCCIAGO.002.s
Località: RSA Pascoli
Strumentazione: 831C 11541
Durata: 28801 (secondi)
Nome operatore: Federico Bassani
Data, ora misura: 11/10/2024 22:00:00
Over SLM: N/A
Over OBA: N/A

(2) CUCCIAGO.002.s 1/3 Leq Spectrum + SLM Leq Lineare					
12.5 Hz	50.3 dB	160 Hz	46.4 dB	2000 Hz	39.1 dB
16 Hz	50.5 dB	200 Hz	44.9 dB	2500 Hz	34.7 dB
20 Hz	50.8 dB	250 Hz	46.2 dB	3150 Hz	31.7 dB
25 Hz	52.5 dB	315 Hz	43.6 dB	4000 Hz	27.5 dB
31.5 Hz	49.7 dB	400 Hz	41.7 dB	5000 Hz	23.8 dB
40 Hz	51.9 dB	500 Hz	41.3 dB	6300 Hz	19.8 dB
50 Hz	51.6 dB	630 Hz	41.5 dB	8000 Hz	16.0 dB
63 Hz	48.2 dB	800 Hz	42.0 dB	10000 Hz	11.6 dB
80 Hz	48.0 dB	1000 Hz	41.3 dB	12500 Hz	10.0 dB
100 Hz	48.0 dB	1250 Hz	42.6 dB	16000 Hz	9.9 dB
125 Hz	47.6 dB	1600 Hz	41.4 dB	20000 Hz	8.7 dB



L1: 57.6 dBA L5: 54.4 dBA
L10: 53.1 dBA L50: 48.4 dBA
L90: 43.8 dBA L95: 43.3 dBA



$L_{Aeq} = 50.3 \text{ dB}$

Annotazioni:

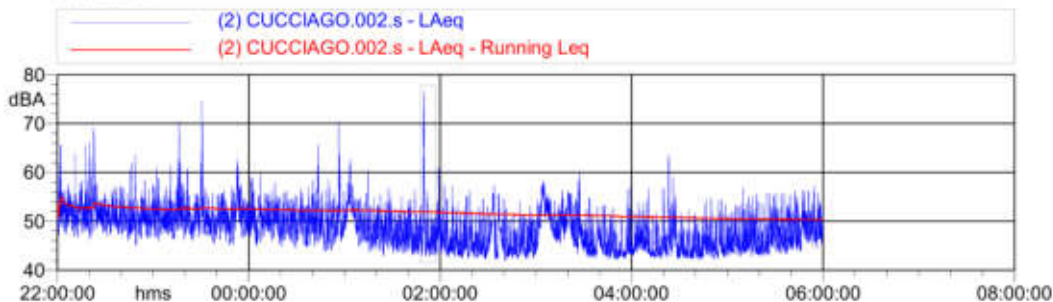
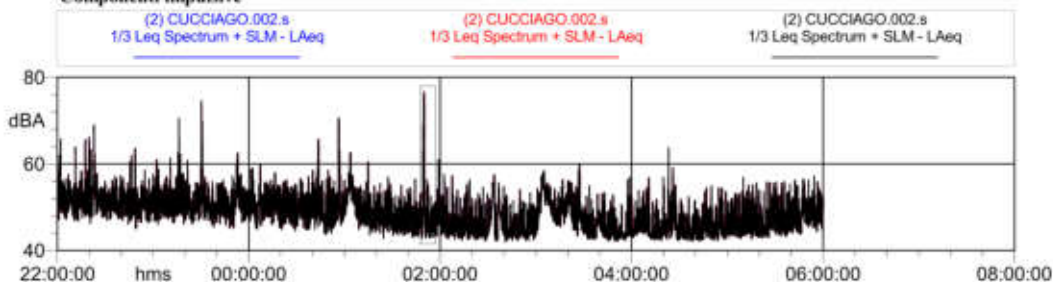


Tabella Automatica delle Maschere				
Nome	Inizio	Durata	Leq	
Totale	22:00:00	08:00:00.500		50.8 dBA
Non Mascherato	22:00:00	07:50:29		50.3 dBA
Mascherato	01:47:48	00:09:31.500		58.7 dBA
Nuova Maschera f	01:47:48	00:09:31.500		58.7 dBA

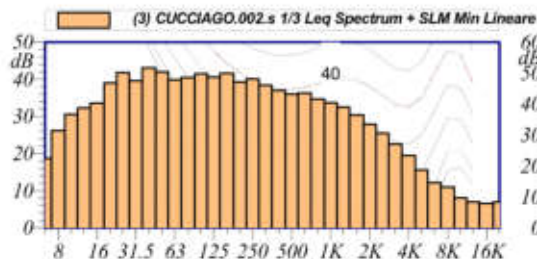
Componenti impulsive



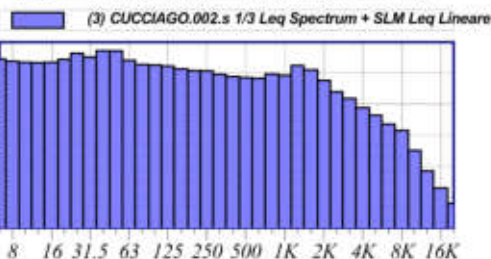


Nome misura: (3) CUCCIAGO.002.s
Località: RSA Pascoli
Strumentazione: 831C 11541
Durata: 26736 (secondi)
Nome operatore: Federico Bassani
Data, ora misura: 12/10/2024 06:00:00
Over SLM: N/A
Over OBA: N/A

(3) CUCCIAGO.002.s 1/3 Leq Spectrum + SLM Leq Lineare					
12.5 Hz	53.4 dB	160 Hz	51.4 dB	2000 Hz	47.6 dB
16 Hz	53.5 dB	200 Hz	50.5 dB	2500 Hz	44.0 dB
20 Hz	54.5 dB	250 Hz	50.7 dB	3150 Hz	41.8 dB
25 Hz	56.4 dB	315 Hz	49.6 dB	4000 Hz	38.8 dB
31.5 Hz	55.2 dB	400 Hz	48.9 dB	5000 Hz	36.4 dB
40 Hz	57.2 dB	500 Hz	48.6 dB	6300 Hz	33.5 dB
50 Hz	57.2 dB	630 Hz	48.3 dB	8000 Hz	31.5 dB
63 Hz	54.1 dB	800 Hz	49.7 dB	10000 Hz	25.0 dB
80 Hz	52.8 dB	1000 Hz	49.3 dB	12500 Hz	18.4 dB
100 Hz	52.6 dB	1250 Hz	52.5 dB	16000 Hz	12.9 dB
125 Hz	52.3 dB	1600 Hz	51.0 dB	20000 Hz	7.9 dB



L1: 71.1 dBA L5: 61.3 dBA
L10: 60.0 dBA L50: 55.2 dBA
L90: 51.3 dBA L95: 50.0 dBA



$L_{Aeq} = 58.7 \text{ dB}$

Annotazioni:

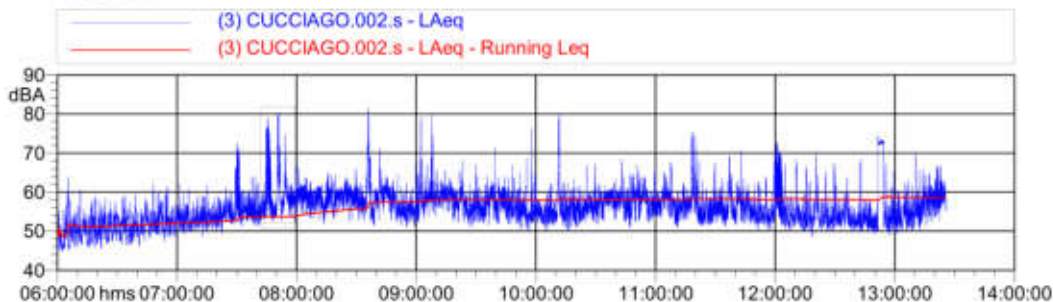
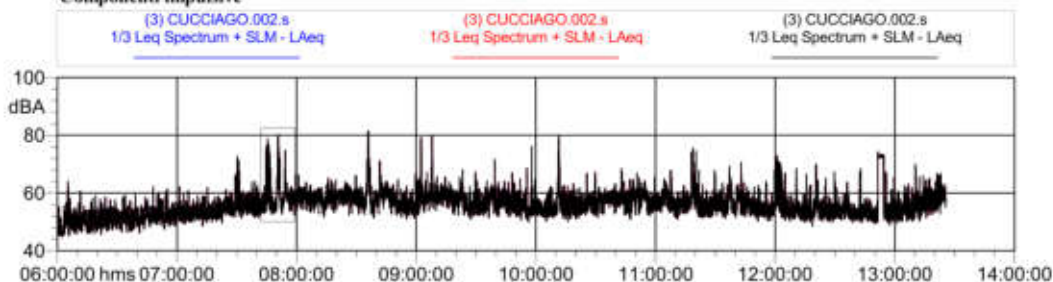


Tabella Automatica delle Maschere			
Nome	Inizio	Durata	Leq
Totale	06:00:00	07:25:35.500	59.2 dBA
Non Mascherato	06:00:00	07:08:27	58.7 dBA
Mascherato	07:42:05	00:17:08.500	65.1 dBA
Nuova Maschera f	07:42:05	00:17:08.500	65.1 dBA

Componenti impulsive





COMUNE DI CUCCIAGO Provincia di Como

Scheda Rilievo n. 3

Punto di Misura:

P3

Zona residenziale – Via Marelli

Coordinate rilievo

45°44'17"N 9°05'44"E



Data inizio rilievo

14/10/2024

Data fine rilievo

14/10/2024

Durata rilievo

11711

Zonizzazione acustica proposta

Classe III

Rilievo Diurno

LAeq	L95	L90	L50	L10	L5	L1
56,0	44,8	46,7	53,6	58,7	60,4	64,8

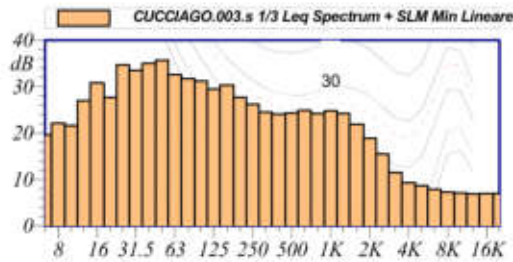
Rilievo Notturno

LAeq	L95	L90	L50	L10	L5	L1

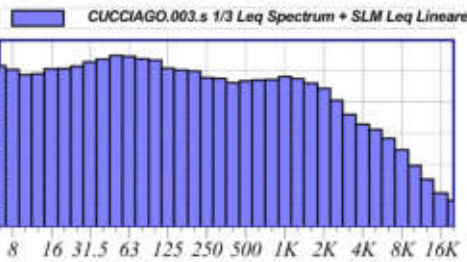


Nome misura: CUCCIAGO.003.s
Località: Cucciago Via Daniele Marelli
Strumentazione: 831C 11541
Durata: 11711 (secondi)
Nome operatore: Federico Bassani
Data, ora misura: 14/10/2024 14:21:08
Over SLM: N/A
Over OBA: N/A

CUCCIAGO.003.s 1/3 Leq Spectrum + SLM Leq Lineare					
12.5 Hz	49.1 dB	160 Hz	50.3 dB	2000 Hz	44.4 dB
16 Hz	50.7 dB	200 Hz	50.0 dB	2500 Hz	40.5 dB
20 Hz	50.8 dB	250 Hz	47.9 dB	3150 Hz	36.0 dB
25 Hz	51.6 dB	315 Hz	47.6 dB	4000 Hz	32.9 dB
31.5 Hz	53.0 dB	400 Hz	46.3 dB	5000 Hz	31.1 dB
40 Hz	53.9 dB	500 Hz	46.9 dB	6300 Hz	28.3 dB
50 Hz	55.0 dB	630 Hz	47.2 dB	8000 Hz	24.6 dB
63 Hz	54.8 dB	800 Hz	47.3 dB	10000 Hz	19.5 dB
80 Hz	54.0 dB	1000 Hz	48.2 dB	12500 Hz	15.1 dB
100 Hz	53.5 dB	1250 Hz	47.5 dB	16000 Hz	10.6 dB
125 Hz	50.9 dB	1600 Hz	46.1 dB	20000 Hz	8.2 dB



L1: 64.8 dBA L5: 60.4 dBA
L10: 58.7 dBA L50: 53.6 dBA
L90: 46.7 dBA L95: 44.8 dBA



$L_{Aeq} = 56.0 \text{ dB}$

Annotazioni:

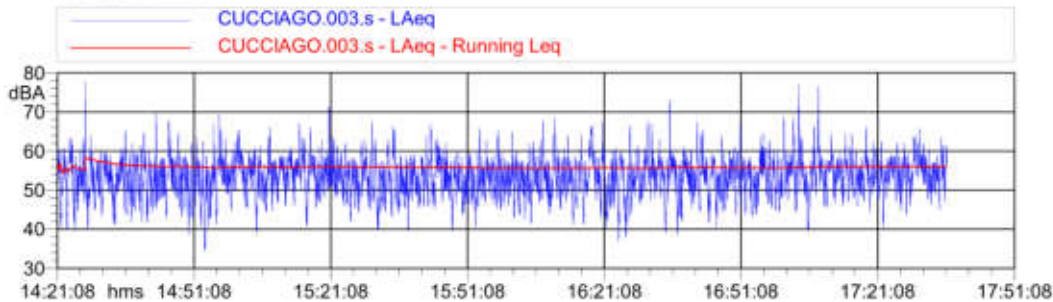
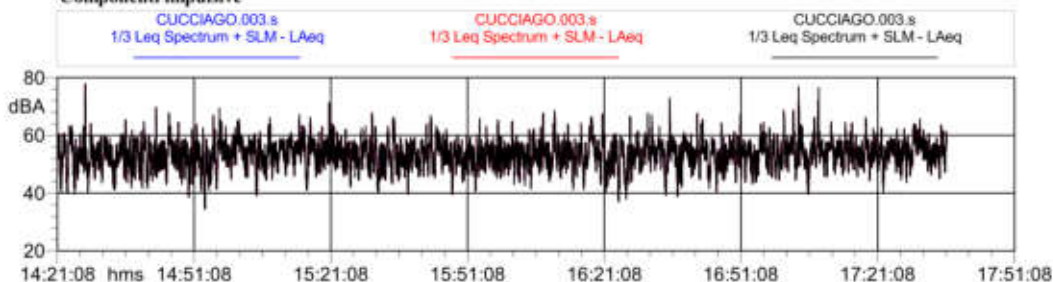


Tabella Automatica delle Maschere			
Nome	Inizio	Durata	Leq
Totale	14:21:08	03:15:10.500	56.0 dBA
Non Mascherato	14:21:08	03:15:10.500	56.0 dBA
Mascherato		00:00:00	0.0 dBA

Componenti impulsive





COMUNE DI CUCCIAGO

Provincia di Como

Scheda Rilievo n. 4

Punto di Misura:

P4

Zona residenziale – Via Ferrari

Coordinate rilievo

45°44'20"N 9°05'51"E



Data inizio rilievo

15/10/2024

Data fine rilievo

15/10/2024

Durata rilievo

3630 s

Zonizzazione acustica proposta

Classe III

Rilievo Diurno

LAeq	L95	L90	L50	L10	L5	L1
53,8	48,4	49,5	52,5	55,7	57,3	61,8

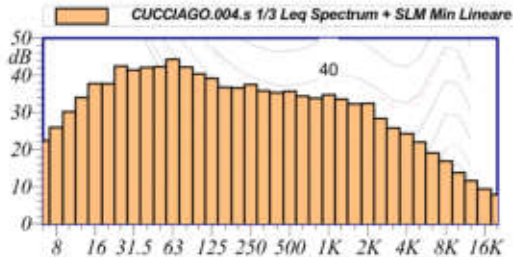
Rilievo Notturno

LAeq	L95	L90	L50	L10	L5	L1

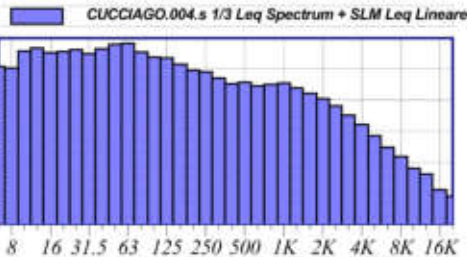


Nome misura: CUCCIAGO.004.s
Località: Cucciago
Strumentazione: 831C 11541
Durata: 3630 (secondi)
Nome operatore: Federico Bassani
Data, ora misura: 15/10/2024 09:33:00
Over SLM: N/A
Over OBA: N/A

CUCCIAGO.004.s 1/3 Leq Spectrum + SLM Leq Lineare					
12.5 Hz	56.8 dB	160 Hz	51.6 dB	2000 Hz	40.5 dB
16 Hz	55.3 dB	200 Hz	49.6 dB	2500 Hz	38.1 dB
20 Hz	55.7 dB	250 Hz	49.1 dB	3150 Hz	35.1 dB
25 Hz	56.2 dB	315 Hz	47.1 dB	4000 Hz	32.1 dB
31.5 Hz	54.9 dB	400 Hz	45.3 dB	5000 Hz	28.5 dB
40 Hz	56.6 dB	500 Hz	45.8 dB	6300 Hz	24.7 dB
50 Hz	58.0 dB	630 Hz	44.6 dB	8000 Hz	21.8 dB
63 Hz	58.3 dB	800 Hz	45.0 dB	10000 Hz	18.0 dB
80 Hz	55.5 dB	1000 Hz	45.5 dB	12500 Hz	16.1 dB
100 Hz	53.9 dB	1250 Hz	43.9 dB	16000 Hz	11.0 dB
125 Hz	53.6 dB	1600 Hz	42.2 dB	20000 Hz	8.8 dB



L1: 61.8 dBA L5: 57.3 dBA
L10: 55.7 dBA L50: 52.5 dBA
L90: 49.5 dBA L95: 48.4 dBA



$L_{Aeq} = 53.8 \text{ dB}$

Annotazioni:

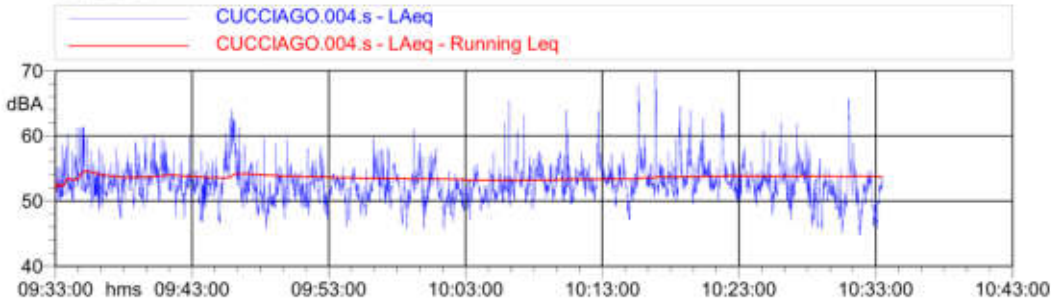
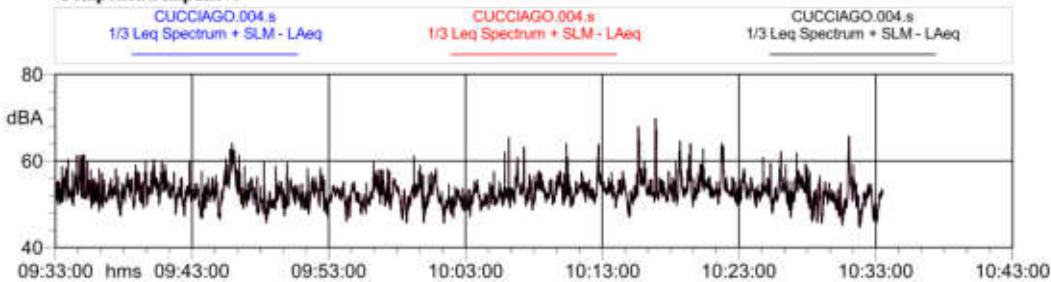


Tabella Automatica delle Maschere			
Nome	Inizio	Durata	Leq
Totale	09:33:00	01:00:29.500	53.8 dBA
Non Mascherato	09:33:00	01:00:29.500	53.8 dBA
Mascherato		00:00:00	0.0 dBA

Componenti impulsive





COMUNE DI CUCCIAGO Provincia di Como

Scheda Rilievo n. 5

Punto di Misura:

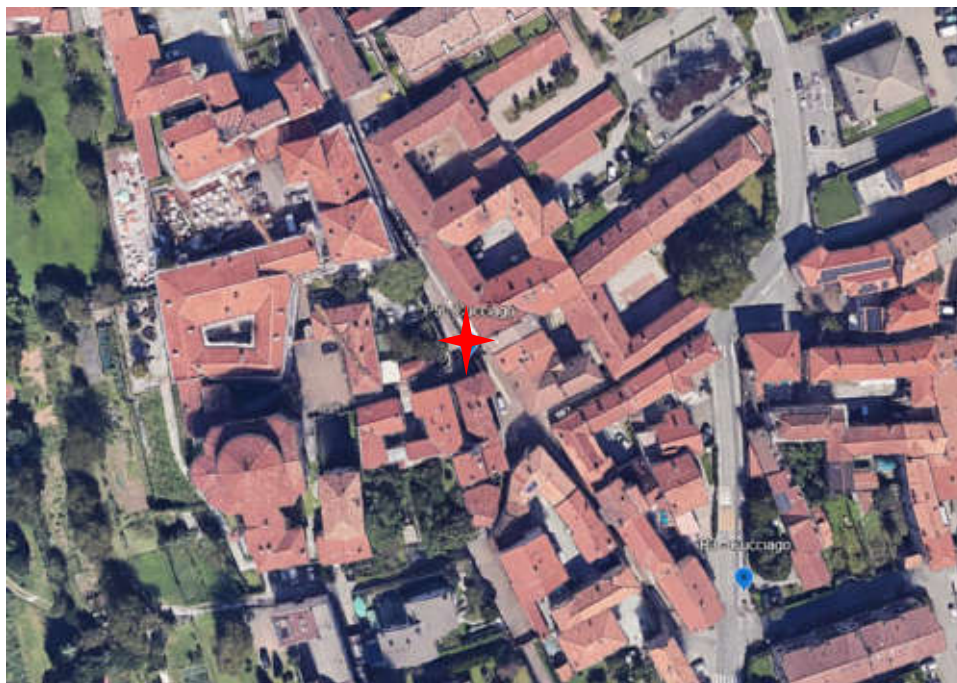
P5

Centro Storico

Via Giosuè Carducci – Via XX Settembre

Coordinate rilievo

45°44'19"N 9°05'40"E



Data inizio rilievo

15/10/2024

Data fine rilievo

15/10/2024

Durata rilievo

7116 s

Zonizzazione acustica proposta

Classe III

Rilievo Diurno

LAeq	L95	L90	L50	L10	L5	L1
44,2	36,8	37,0	39,6	47,5	49,5	53,4

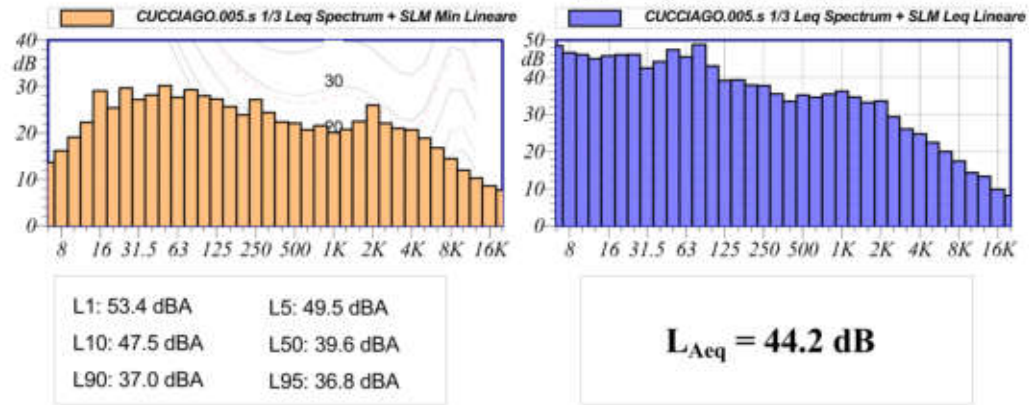
Rilievo Notturno

LAeq	L95	L90	L50	L10	L5	L1



Nome misura: CUCCIAGO.005.s
Località: Cucciago
Strumentazione: 831C 11541
Durata: 7116 (secondi)
Nome operatore: Federico Bassani
Data, ora misura: 15/10/2024 11:00:33
Over SLM: N/A
Over OBA: N/A

CUCCIAGO.005.s					
1/3 Leq Spectrum + SLM Leq					
Lineare					
12.5 Hz	45.0 dB	160 Hz	39.3 dB	2000 Hz	33.6 dB
16 Hz	45.8 dB	200 Hz	37.8 dB	2500 Hz	29.3 dB
20 Hz	46.1 dB	250 Hz	37.8 dB	3150 Hz	26.1 dB
25 Hz	46.2 dB	315 Hz	35.5 dB	4000 Hz	24.8 dB
31.5 Hz	42.5 dB	400 Hz	33.6 dB	5000 Hz	22.5 dB
40 Hz	44.2 dB	500 Hz	35.2 dB	6300 Hz	20.0 dB
50 Hz	47.4 dB	630 Hz	34.6 dB	8000 Hz	17.4 dB
63 Hz	45.5 dB	800 Hz	35.4 dB	10000 Hz	14.4 dB
80 Hz	48.8 dB	1000 Hz	36.3 dB	12500 Hz	13.3 dB
100 Hz	43.1 dB	1250 Hz	34.7 dB	16000 Hz	9.8 dB
125 Hz	39.1 dB	1600 Hz	33.2 dB	20000 Hz	8.2 dB



Annotazioni:

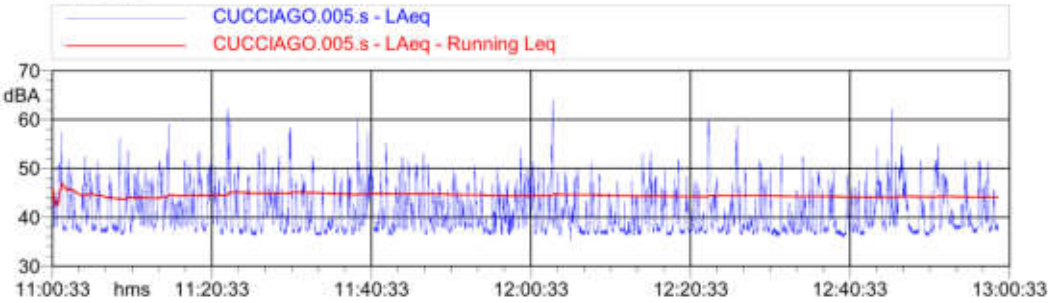
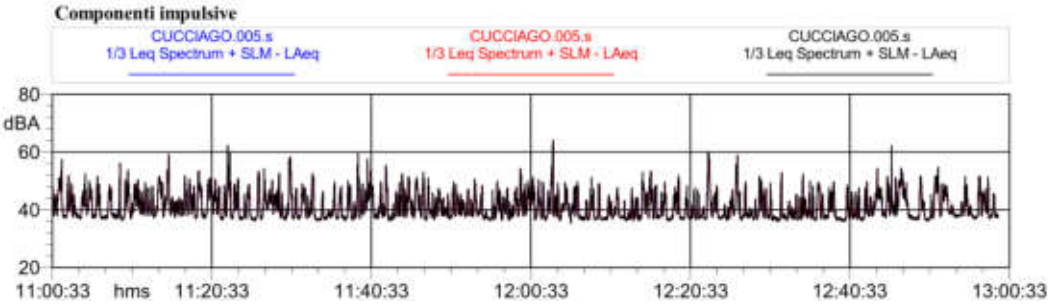


Tabella Automatica delle Maschere			
Nome	Inizio	Durata	Leq
Totale	11:00:33	01:58:36	44.2 dBA
Non Mascherato	11:00:33	01:58:36	44.2 dBA
Mascherato		00:00:00	0.0 dBA





COMUNE DI CUCCIAGO Provincia di Como

Scheda Rilievo n. 6

Punto di Misura:

P6

Zona residenziale – Via Pietro Panzeri

Coordinate rilievo

45°44'34"N 9°05'45"E



Data inizio rilievo

15/10/2024

Data fine rilievo

15/10/2024

Durata rilievo

3013 s

Zonizzazione acustica proposta

Classe II

Rilievo Diurno

LAeq	L95	L90	L50	L10	L5	L1
51,7	42,7	44,2	48,9	52,7	54,1	62,3

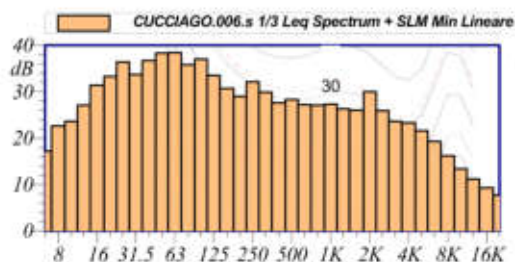
Rilievo Notturno

LAeq	L95	L90	L50	L10	L5	L1

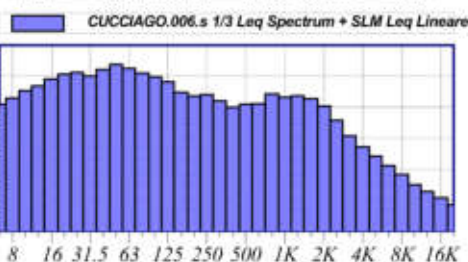


Nome misura: CUCCIAGO.006.s
Località: Cucciago
Strumentazione: 831C 11541
Durata: 3013 (secondi)
Nome operatore: Federico Bassani
Data, ora misura: 15/10/2024 14:06:22
Over SLM: N/A
Over OBA: N/A

CUCCIAGO.006.s 1/3 Leq Spectrum + SLM Leq Lineare					
12.5 Hz	46.8 dB	160 Hz	44.8 dB	2000 Hz	40.4 dB
16 Hz	49.1 dB	200 Hz	43.6 dB	2500 Hz	35.8 dB
20 Hz	50.6 dB	250 Hz	44.0 dB	3150 Hz	30.7 dB
25 Hz	51.2 dB	315 Hz	42.0 dB	4000 Hz	27.2 dB
31.5 Hz	50.1 dB	400 Hz	40.0 dB	5000 Hz	24.2 dB
40 Hz	52.2 dB	500 Hz	40.9 dB	6300 Hz	21.1 dB
50 Hz	53.8 dB	630 Hz	41.1 dB	8000 Hz	18.3 dB
63 Hz	52.6 dB	800 Hz	44.3 dB	10000 Hz	15.0 dB
80 Hz	51.0 dB	1000 Hz	43.2 dB	12500 Hz	12.7 dB
100 Hz	49.8 dB	1250 Hz	43.7 dB	16000 Hz	10.7 dB
125 Hz	48.2 dB	1600 Hz	42.7 dB	20000 Hz	8.5 dB



L1: 62.3 dBA L5: 54.1 dBA
L10: 52.7 dBA L50: 48.9 dBA
L90: 44.2 dBA L95: 42.7 dBA



$L_{Aeq} = 51.7 \text{ dB}$

Annotazioni:

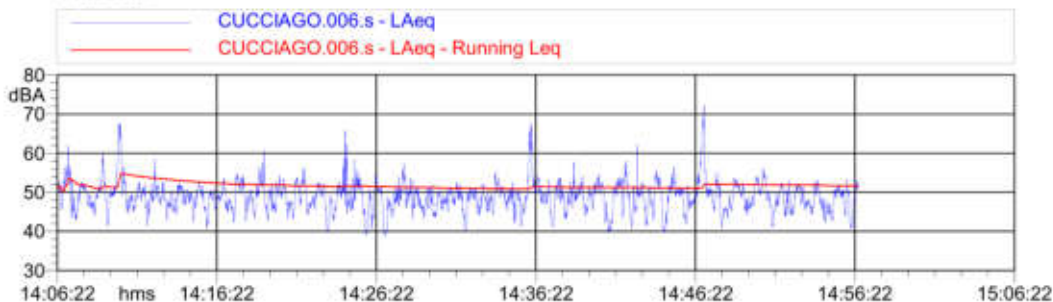
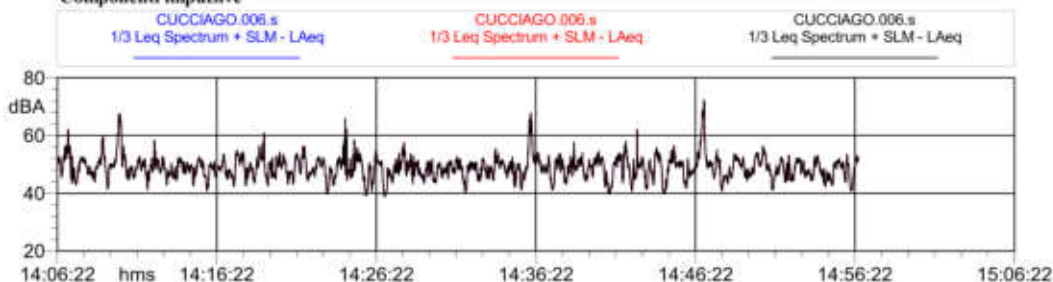


Tabella Automatica delle Maschere			
Nome	Inizio	Durata	Leq
Totale	14:06:22	00:50:12.500	51.7 dBA
Non Mascherato	14:06:22	00:50:12.500	51.7 dBA
Mascherato		00:00:00	0.0 dBA

Componenti impulsive





COMUNE DI CUCCIAGO

Provincia di Como

Scheda Rilievo n. 7

Punto di Misura:

P7

Parcheggio Cimitero

Coordinate rilievo

45°44'27"N 9°05'53"E



Data inizio rilievo

15/10/2024

Data fine rilievo

15/10/2024

Durata rilievo

2012 s

Zonizzazione acustica proposta

Classe IV

Rilievo Diurno

LAeq	L95	L90	L50	L10	L5	L1
63,6	44,5	45,8	54,9	68,3	70,5	74,2

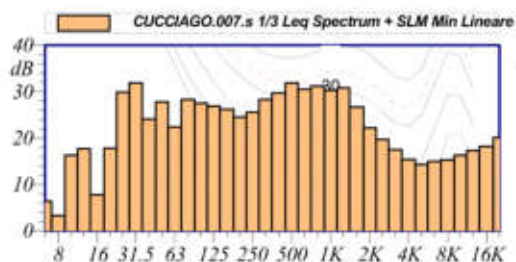
Rilievo Notturno

LAeq	L95	L90	L50	L10	L5	L1

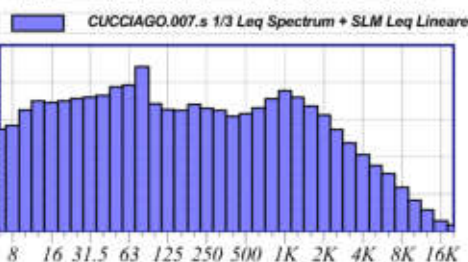


Nome misura: CUCCIAGO.007.s
Località: Cucciago
Strumentazione: 831C 11541
Durata: 2012 (secondi)
Nome operatore: Federico Bassani
Data, ora misura: 15/10/2024 15:14:20
Over SLM: N/A
Over OBA: N/A

CUCCIAGO.007.s					
1/3 Leq Spectrum + SLM Leq					
Lineare					
12.5 Hz	55.0 dB	160 Hz	52.5 dB	2000 Hz	51.2 dB
16 Hz	54.6 dB	200 Hz	54.1 dB	2500 Hz	47.3 dB
20 Hz	55.0 dB	250 Hz	53.0 dB	3150 Hz	43.7 dB
25 Hz	55.6 dB	315 Hz	52.5 dB	4000 Hz	40.6 dB
31.5 Hz	56.0 dB	400 Hz	50.9 dB	5000 Hz	37.6 dB
40 Hz	56.5 dB	500 Hz	51.6 dB	6300 Hz	35.4 dB
50 Hz	58.8 dB	630 Hz	53.1 dB	8000 Hz	31.7 dB
63 Hz	59.3 dB	800 Hz	55.6 dB	10000 Hz	28.3 dB
80 Hz	64.2 dB	1000 Hz	57.8 dB	12500 Hz	25.7 dB
100 Hz	54.2 dB	1250 Hz	56.0 dB	16000 Hz	22.7 dB
125 Hz	52.7 dB	1600 Hz	53.6 dB	20000 Hz	21.6 dB



L1: 74.2 dBA L5: 70.5 dBA
L10: 68.3 dBA L50: 54.9 dBA
L90: 45.8 dBA L95: 44.5 dBA



$L_{Aeq} = 63.6 \text{ dB}$

Annotazioni:

CUCCIAGO.007.s - L_{Aeq}
CUCCIAGO.007.s - L_{Aeq} - Running Leq

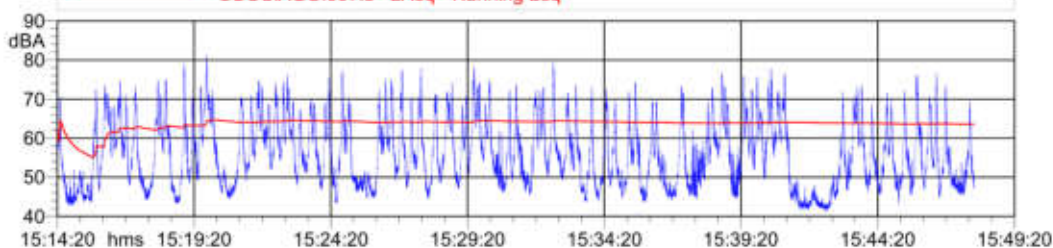


Tabella Automatica delle Maschere

Nome	Inizio	Durata	Leq
Totale	15:14:20	00:33:31.800	63.6 dBA
Non Mascherato	15:14:20	00:33:31.800	63.6 dBA
Mascherato		00:00:00	0.0 dBA

Componenti impulsive

